

Season Sponsors

Season Supporter

The Colleen Healey Charitable Fund;
Vanguard Charitable;
Julia Wiegand Burger & Mr. Robert Wiegand II
The Harold & Mimi Steinberg Charitable Trust

Bold Benefactor

Dr. Jan Kennaugh & Chip Horne
Diana & Mike Kinsey

Audacious Patron

Sheri Raders

Show Sponsors

Ensemble

Jim Gusek & Shelley Fleetwood

Curious is generously supported by

**BONFILS
STANTON**
FOUNDATION



DENVER
ARTS & VENUES



Fred & Jean
ALLEGRETTI
FOUNDATION

NORD THE NORD FAMILY
FOUNDATION

ROSE
COMMUNITY
FOUNDATION



The Colorado
Health Foundation™



THE *Adly* FOUNDATION

Golden Hands Fund at Rose Community Foundation

Murphy Mueller Family Fund

Bowen Family Performing Arts Field of Interest Fund

The Harold and Mimi Steinberg Charitable Trust

Eulipions Fund

NOTES FROM LEADERSHIP & DIRECTOR

LEADERSHIP'S NOTES

What's happening with the building?

It's the question we're hearing most often at Curious, and we completely understand. The building is still on the market for sale, and we want to assure you that we will continue to call our beloved Acoma Street building home through our upcoming Season 28, kicking off in early September 2025. As we get closer to wrapping up this season, we're more energized than ever, fueled by your incredible support and enthusiasm.

The truth is, we're in a fortunate position with the building. We're not just waiting for any offer; we're being thoughtful about the deal we pursue. In partnership with our realtor, we're looking for the right fit—one that aligns with the future we envision for Curious and supports everything we've built together.

We're committed to transparency about our future and are excited for what's ahead. Season 28 marks another bold chapter in our journey, and we can't wait to keep creating, innovating, and sharing the magic of live theatre with you. Your continued support means the world to us, and we're ready to rise even higher.

Let the ascent begin!



Jada Suzanne Dixon
Producing Artistic Director

DIRECTOR'S NOTES

When I first encountered *Downstate*, I was struck by how its characters—convicted sex offenders living in a group home—invite us into a world that society prefers to ignore. Bruce Norris has written a play that asks us to confront uncomfortable truths, question our own assumptions, and above all, wrestle with the idea of forgiveness.

At its core, *Downstate* is not just about the people we deem irredeemable—it is about us. It explores how we navigate the complexities of morality, justice, and the possibility of atonement. What does it truly mean to pay one's debt to society? Can someone who has committed an unforgivable act ever be seen as fully human again? And perhaps most provocatively, where do we draw the line on forgiveness?

This play challenges our assumptions. It doesn't give us a villain to hate or a hero to root for. Instead, it compels us to confront our own biases. In a world quick to demonize, Norris does not shy away from humanizing these characters—not to excuse them, but to remind us of the humanity behind labels like "criminal" or "monster." It asks: Can we extend empathy to those we deem unworthy of it?

The setting—a group home under stringent surveillance—highlights how our justice system refuses to release its grip on those it deems irredeemable. The residents are not free in any conventional sense. Their constant monitoring and continued punishment serve as a reminder that once someone is labeled, society rarely allows them to escape the cage we've built around them.

In rehearsal, our focus has been on the complexities of each character—how their struggles with regret, defiance, and yearning for dignity shape their relationships. As Bruce Norris himself puts it: This play is about "tolerating" their existence—allowing them simply to be. Can we watch them with empathy, knowing what they've done? Can we see them as fully human, despite their Past?

As you sit in the theater, we invite you to consider the tough questions this play raises. What is the limit of your compassion? Where do you draw the line between justice and revenge? And perhaps most importantly, when you leave, we hope you take a moment to reflect on what kind of society we want to be: one that seeks retribution, or one that dares to imagine redemption.

Downstate will not easily leave you. It lingers in the air, in the silence, in the spaces between the lines of dialogue. It's uncomfortable, yes, but it is precisely in that discomfort that we are forced to grapple with our own assumptions about justice, forgiveness, and humanity. It is a difficult but necessary conversation.

I am honored to bring this story to life at Curious Theatre Company, and I hope it sparks conversations that extend well beyond the theater walls.

Christy Montour-Larson
Director

Curious Theatre Company

Presents

Downstate

by

Bruce Norris

Directed by **Christy Montour-Larson†**

SETTING:

A group home. Downstate, Illinois. The time is present.

CAST

(in order of appearance)

ANDY.....	Sean Scrutchins*
EM.....	Karen Slack
FRED.....	Jim Hunt*
GIO.....	Rakeem Lawrence
DEE.....	Cajardo Lindsey*
IVY.....	GerRee Hinshaw
FELIX.....	Sam Gilstrap
EFFIE.....	Julia McGowan

PRODUCTION TEAM

Scenic Designer.....	Caitlin Ayer**
Scenic Coordinator.....	Nick Kargel
Costume Designer.....	Erin Carignan**
Lighting Designer.....	Jonathan Spencer**
Sound Design.....	Max Silverman
Properties Design.....	Katie Hopwood
Stage Manager.....	Wayne Breyer*
Assistant Stage Manager.....	Drake J. Susuras
Assistant Director.....	Samantha Heppenstall
Deck Crew.....	Adara Baltazar, Nadia White
Fight Director.....	Sean Scrutchins

Special Thanks to: Luke Sorge and Adrian Egolf; Lauren Rivas; Erica Johnson

DOWNSTATE will be performed with a 15 minute intermission

BOLD = Curious Artistic Company Member

* = Appearing through an Agreement between this theatre, Curious Theatre Company, and Actors' Equity Association, the Union of Professional Actors and Stage Managers in the United States.

** = Member of the United Scenic Artists, Local USA 829

† = Director is a Member of the Society of Stage Directors and Choreographers Society, a national theatrical labor union



The Director is a member of the **STAGE DIRECTORS AND CHOREOGRAPHERS SOCIETY**, a national theatrical labor union.

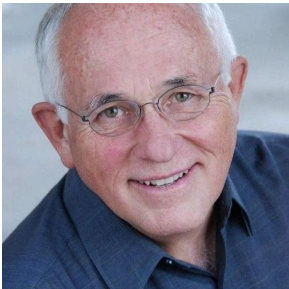
ARTIST BIOGRAPHIES



Sam Gilstrap (he/him) has been a fixture in the Colorado theater scene since 2008. With a degree in performance from Metropolitan State University in Denver, he's earned opportunities at most of the major play houses in Colorado. Recently, Curious patrons saw him as the Wolf in the critically acclaimed REFUGE. As well as his Denver Center debut in THEATRE OF THE MIND. From the stage to film and tv (that is if you don't blink) you can find him grinding for his art.



GerRee Hinshaw (she/her) GerRee Hinshaw is thrilled to return to the Curious stage. She last appeared in the world premiere of REFUGE (season 24), WATER BY THE SPOONFUL and THE HAPPIEST SONG PLAYS LAST (season 19), and THE WAR ANTHOLOGY (season 8). A Curious artistic company member, GerRee is also an associate artist and board member at Local Theater Company. Colorado stage credits include MEN ON BOATS (The Catamounts), MISS YOU LIKE HELL (The Aurora Fox), and RAISED ON RONSTADT (Local), a play written by Ms. Hinshaw, for which her performance received a Henry Award. Her directing credits include DREAMHOUSE (Theatreworks) and THE BALLOT OF PAOLA AGUILAR (BETC). This fall, she'll direct DANCE NATION for Phamaly.



Jim Hunt (he/him) Jim Hunt has been active in Denver-area theatre for over fifty years, twenty-five of which include mainstage productions at Curious (ART, EURYDICE, AFTER THE REVOLUTION, CHARLES IVES TAKE ME HOME, and THE MINUTES). Recent roles include Scrooge in Josh Hartwell's adaptation of the Dickens classic, A CHRISTMAS CAROL (Miners Alley), Aslaksen in AN ENEMY OF THE PEOPLE (BETC), Oldfield in THE MINUTES (Curious Theatre), John in FOR PETER PAN ON HER 70TH BIRTHDAY (a show that sadly closed on opening night, March 13, 2020, after one preview (Aurora Fox Arts Center), the Stage Manager in OUR TOWN (Miners Alley), Homer/Simon in THE REMBRANDT (BETC), and Joe in GOING TO A PLACE WHERE YOU ALREADY ARE (BETC). Jim is honored to be an artistic company member at Curious Theatre Company and a BETC ensemble member. In 2013 he received the Colorado Theatre Guild's Lifetime Achievement Award at the annual Henry Awards Ceremony—an event that he, Gloria Shanstrom, and Josh Hartwell produced for its first eleven years.



Rakeem Lawrence (he/him) is grateful to be returning to the Curious stage! REGIONAL: ROMEO AND JULIET (Shakespeare Theatre Company), BITE SIZE: TOXOPLASMOSIS, GOODNIGHT MOON (Denver Center), GLORIA (Curious Theatre Company), SIX DEGREES OF SEPARATION (Redhouse Arts Center); PETER AND THE STARCATCHER (Virginia Stage Company), PIPELINE, A RAISIN IN THE SUN, LITTLE SHOP OF HORRORS, (THEATREWORKS Colorado Springs), STOCKADE (Local Theatre Company); AIRNESS (Benchmark Theatre); KILL MOVE PARADISE (Unicorn Theatre); TWELFTH NIGHT, ROMEO AND JULIET (Colorado Shakespeare Festival); MY FAIR LADY, LITTLE WOMEN, MARY POPPINS (Quintessence Theatre Group); ADA AND THE ENGINE (Studio Theatre, Tierra Del Sol) @svhman



Cajardo Lindsey (he/him) is an actor, screenwriter, director, and attorney. Some of his theatre credits include: Curious Theatre Company: THE MINUTES, HILLARY AND CLINTON, SKELETON CREW, DETROIT '67, THE BROTHER SISTER PLAYS, FENCES, THE WHIPPING MAN; Denver Center Theatre Company: ALL THE WAY, JUST LIKE US, A RAISIN IN THE SUN; Arvada Center: TO KILL A MOCKINGBIRD, WAIT UNTIL DARK, A RAISIN IN THE SUN; The Aurora Fox: CRUMBS FROM THE TABLE OF JOY; Shadow Theatre Company: Joe Turner's COME AND GONE, WHO'S AFRAID OF VIRGINIA WOOLF, BLOOD KNOW; Miners Alley Playhouse: THE NIGHT OF THE IGUANA, LOBBY HERO AND

MISERY. He is a multiple Denver Post Ovation, Best of Westward, Colorado Theatre Guild Henry Nominee and Award-winning actor. Social media = @cajardo.

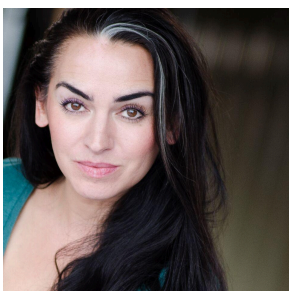


Julia McGowan (she/her) is thrilled to be making her Denver area theatre debut with Curious Theatre! Recent credits include ALICE IN CHAOS(Alice), IN THE HEAT OF IT ALL (Marie), DOG SEES GOD(Van's Sister). Education: B.A Theatre University of Southern California



Sean Scrutchins (he/him) is an active teaching artist in the Denver area. He has worked as a theatre instructor for the CSF Education and Outreach programs and at the Denver Center for the Performing Arts. He received his MFA in theatre performance from the University of Southern Mississippi and his BFA from the University of Central Oklahoma. Curious Theatre acting credits include AMERIKIN, HEROES OF THE FOURTH TURNING, AMERICAN SON, THE BODY OF AN AMERICAN, APPROPRIATE, DUST, THE WHIPPING MAN, and 9 CIRCLES. Other acting credits include MACBETH, MERRY WIVES OF WINDSOR, MUCH ADO ABOUT NOTHING, KING LEAR, TWO GENTLEMEN OF

VERONA (Colorado Shakespeare Festival); THE LIAR, ANIMAL FARM, TARTUFFE, BUS STOP, WAITING FOR GODOT, (Arvada Center); ELEPHANT & PIGGIE'S: WE ARE IN A PLAY, LITTLE RED, GOODNIGHT MOON (DCPA).



Karen Slack (she/her) is originally from Denver, Colorado and trained at the American Academy of Dramatic Arts and HB Studio in New York City. Karen is honored to have worked at Curious Theatre Company for the better part of two decades and is a proud company member. Some favorite productions at Curious include: THE LONG CHRISTMAS RIDE HOME, 9 PARTS OF DESIRE, EURYDICE, GOD OF CARNAGE, THE MINUTES, and TRUTH BE TOLD. Other favorite roles include: Medea in MEDEA, Lady Macbeth in MACBETH, Frida Kahlo in PAINTED BREAD, Beatrice in MUCH ADO ABOUT NOTHING, and the one woman show THE SYRINGA TREE. Slack has worked with various theaters

throughout Colorado receiving awards and accolades for her work.

Caitlin Ayer (she/her) Caitlin is delighted to return to Curious, where she previously designed sets for TRUTH BE TOLD, TIME STANDS STILL, and GOOD PEOPLE. Recent/favorite design credits include EVIL (Set Designer, S2-4, CBS); UnCOUPLED (Art Director, S1, Netflix); GODFATHER OF HARLEM (Set Designer, S3-4, MGM+); ONLY MURDERS IN THE BUILDING (Set Designer, S3&5, Hulu); WILLA'S AUTHENTIC SELF (Production Designer, Lisa Clair Group); THE RENDER (Art Director, Big Art Group @ Teatro Nazionale); SOME LIKE IT HOT (Asst Set Designer, Broadway); AMERICAN BUFFALO (Asst Set Designer, Broadway); WHO'S AFRAID OF VIRGINIA WOOLF (Asst Set Designer, Broadway). Recipient of 2 Henry Hewes noms, Henry Award for Best Scenic Design, the Rose Brand Scene Design Award. Proud member of USA 829. BFA Webster University. MFA Carnegie Mellon University. www.caitlinayer.com.

Wayne Breyer (he/him) is the production manager and resident stage manager for Curious. With Curious, he stage managed A CASE FOR THE EXISTENCE OF GOD, CULLUD WATTAH, LETTERS OF SURESH, THE MINUTES, ON THE EXHALE, AMERIKIN, FRANKLINLAND, HEROES OF THE FOURTH TURNING, and the world premiere of REFUGE. Other stage management credits: ELEPHANT & PIGGIE'S "WE ARE IN A PLAY"; GHOST VARIATIONS at the Colorado New Play Summit (Denver Center Theatre Company), Public Domain Theatre Festival, EDDIE AND DAVE, LAND OF MILK AND HONEY, THE WHISKEY TASTING, THE ROUGH, SHICKHEADED PETER And EVERYBODY (The Catamounts); QUEENS GIRL IN THE WORLD and THE MUSIC OF BLACK NATIVITY (Aurora Fox Arts Center); RECIPE (Theater Artibus); the 2024 Henry Awards (Colorado Theatre Guild); and the 2019 Colorado New Play Festival. He is also a properties designer and has designed for Curious, The Catamounts, Phamaly Theatre Company, Thunder River Theatre Company, and Vintage Theatre. Wayne trained as an apprentice stage manager with the Denver Center Theatre Company and is an associate company member of The Catamounts.

Erin Carignan (she/her) Erin is a versatile costume designer and textile artist who has worked in regional theatre, opera, dance, music videos, and print ads in roles ranging from costume designer, stylist, painter-dyer and breakdown artist, to crafts artisan. She has been a part of over 200 professional productions with several theatre companies, most notably Old Globe Theatre, Los Angeles Opera, La Jolla Playhouse, Pioneer Theatre, and Curious Theatre. Her research centers around her most passionate subjects: costume design, textile surface modification, and wearable art. This research ties in with her own book *Dyeing for Entertainment: Dyeing, Painting, Breakdown, and Special Effects for Costumes* (Focal Press/Routledge 2023). She is an Assistant Professor of Costume Design at Colorado State University, Fort Collins and the Chair of the KCACTF Design Technology Management Region 7. She is an active member of USITT, Costume Society of America, Society of Dyers and Colourists, and United Scenic Artists 829.

Samantha Heppenstall (she/her) An apprentice through the Curious Bridge Program, Samantha Heppenstall is a recent graduate from the BA Theatre Studies and English programs at the University of Northern Colorado, and is thrilled to make her professional debut with Curious. Directing credits include THE TRAIL TO OREGON!, NEVER THE SINNER and ROPE, and she most recently served as assistant director for WORKING: A MUSICAL at UNC. Acting credits include THIS RESTLESS HOUSE (Chorus), NO EXIT (Estelle), INAUGURATION (Dina), and MACHINAL (Telephone Girl/Ensemble), and dramaturgy THIS RESTLESS HOUSE, THE EARLY GIRL, INFORMATION FOR FOREIGNERS, and RED. She currently serves as the Assistant Artistic Director for the Little Theatre of the Rockies in Greeley, Colorado.

Katie Hopwood (she/her) Katie is excited to be working with Curious for the first time! Her prop work was most recently featured in BETC performances HOPE & GRAVITY, ENEMY OF THE PEOPLE, and HOLLY, ALASKA! She graduated from Salisbury University with a degree in Theatre Production and loves showing her creative side through prop design. She looks forward to working on more productions in the community!

Christy Montour-Larson (she/her) has been a member of the Artistic Company for over 20 years, and her recent directing credits at Curious include TRUTH BE TOLD, THE MINUTES and THE LIFESPAN OF A FACT. Christy's work has also been seen in Colorado at the Denver Center (SHADOWLANDS, THE GIVER) the Arvada Center (THE DIARY OF ANNE FRANK, CABARET), Creede Repertory (AUGUST: OSAGE COUNTY) Local Theatre, Town Hall Arts Center, Phamaly, BETC, Theatreworks, Colorado Springs Fine Arts Center, Theatre SilCo and the Aurora Fox. Nationally, Christy has directed at Pioneer Theatre, Tent Theatre, New American Theatre, Rochester Civic Theatre, the Duluth Playhouse, Dark Horse Theatre and for Seven Devils Playwrights Conference. A passionate supporter of new work, she has directed many staged readings and world premieres, including; TWO DEGREES by Tira Palmquist, GENERAL STORE by Brian Watkins, STOCKADE by Andrew Rosendorf and YOU WILL GET SICK by Noah Diaz. Christy's accolades include 4 Colorado Theatre Guild Henry Awards, out of 16 nominations. She has also been named Top Director by the Denver Post, Westword, 5280 Magazine and CBS4 Denver. MFA in Directing from Rutgers University.

Max Silverman (he/him) is a Composer and Sound Designer. Curious Theatre Company: A CASE FOR THE EXISTENCE OF GOD, AMERIKIN (OnStage Colorado Theatre Award). Other highlights include: Denver Center for the Performing Arts, Arvada Center, Colorado Shakespeare Festival, Lone Tree Arts Center, Colorado Springs Fine Arts Center, Creede Repertory Theatre, The Catamounts, Local Theater Company, Cherry Creek Theatre, University of Colorado. Theatre Or. NYC: Atlantic Theatre Company, MCC, Theatre For A New Audience, Brooklyn Academy of Music, Encores! Off-Center, 5th Floor Theatre, Inproximity Theatre, New York Deaf Theatre, Epic Players, Actionplay, Columbia University, American Academy of Dramatic Arts and Juilliard. International: Hoodoo Immersive, Berlin and CLB Berlin. Regional: George Street Playhouse, Williamstown Theatre Festival, Trinity Repertory Theatre, Hartford Stage, Penguin Repertory Theatre, Cara Mia Theatre, 4th Wall Theatre, Quintessence Theatre and Bard College. Max has written music for podcasts, advertisements and short films. Max is a 2023 True West Award recipient, three time OnStage Colorado Award winner and six time Henry Award nominee. max-silverman.com

Jonathan Spencer (he/him) Broadway, Touring, and Regional designs having collaborated on over 130 productions and counting, including the world premier MR. HOLLAND'S OPUS at Ogunquit Playhouse. RENT 20th – 25th Anniversary Tours with over 1200 performances, PRISCILLA QUEEN OF THE DESERT National Tour, Off-Broadway: WHO'S HOLIDAY (West Side Theatre), CARRIE MAE WEEMS GRACE NOTES: REFLECTIONS FOR NOW (John F Kennedy Center, Spoleto USA) YOU ARE MINE OWN Directed by Atom Egoyan (Spoleto USA). Recent designs include the lighting for NEWSIES and LITTLE SHOW OF HORRORS with Theatre Under The Stars, Houston. Jonathan teaches design in the University of Colorado Boulder Theatre & Dance BFA and Southern Oregon University Masters programs. Member USA 829. www.JSpencerDesign.com

Drake J. Susuras (he/him) Drake J. Susuras is a multidisciplinary theatre artist born and raised in Colorado with a BFA in Acting from the University of Evansville. Some of his more current acting credits include Lou in SISTERS OF SWING with Vintage Theatre and Ovation West Performing Arts, Benedick and Claudio in ADO written for The New Harmony Project, and Tom Collins in RENT at Shanklin Theater. Drake's written work has been read, workshopped, and staged throughout Southern Indiana and Colorado including a recent staged reading at DCPA's Champa Arts Studio. Drake is the recipient of the Jack Reynolds Outstanding Thespian Award and the Virginia Lowell Grabill Award for Playwriting. Drake has worked with Curious Theatre, 24 Hour Plays, Two Cent Lion, Vintage Theatre, Ovation West Performing Arts, and Roshni Light.

GO DEEPER: *DOWNSTATE*

Compiled by Christy Montour-Larson

Exploring *Downstate*: Interviews & Reviews

- *Bruce Norris on Downstate* – Steppenwolf Theatre
Insights from Norris on the creation of *Downstate*, its themes, and the challenges of addressing such a provocative subject.
steppenwolf.org
- *Bruce Norris on the Moral Complexities of Downstate* – Observer
Norris discusses society's tendency to identify collective villains and the moral ambiguities explored in the play.
observer.com
- *Theatre Review* – *The New York Times*: "A Foulness in the Very Air They Breathe"
Laura Collins-Hughes examines the play's emotional intensity, its unflinching engagement with taboos, and the questions it raises about justice and redemption.
nytimes.com

Justice & Punishment: Ethical and Legal Perspectives

- *Life on the Sex Offender Registry: The Human Cost* – *The Marshall Project*
Personal stories and investigative journalism exploring the real-life impact of sex offender registries.
themarshallproject.org
- *Sex Offender Registries: Balancing Public Safety and Rehabilitation* – *Tibbs Law*
Explores how registries impact housing, employment, and reintegration, highlighting the tension between safety and rehabilitation.
tibbslaw.com

Survivor Voices: Advocacy & Trauma

- *What Sexual Assault Survivors Want You to Know* – *Time Magazine*
A first-person narrative piece featuring multiple survivor voices on healing, justice, and public perception.
time.com
- *Effects of Sexual Violence* – RAINN
A comprehensive look at the psychological, emotional, and physical effects of sexual violence.
rainn.org

Second Chances? Community Attitudes & Reintegration

- *Can Sex Offenders Change? A Look at Rehabilitation and Reintegration* – NPR
A discussion featuring experts and formerly incarcerated individuals on the possibilities and challenges of reintegration.
npr.org
- *Ethics and Religion Talk: Should Congregations Welcome Sexual Offenders?* – The Rapidian
A discussion on religious communities' ethical considerations in accepting offenders.
therapidian.org
- *Who Is Allowed to Write About Difficult Topics?* – America Magazine
Examines the role of theatre in exploring sensitive social issues, sparked by controversy over Downstate's Washington Post review.
americamagazine.org

Crime, Consequence & Policy: What Works?

- *Evaluating the Effectiveness of Sex Offender Registration and Notification Policies* – OJP
Analyzes whether registration laws actually reduce recidivism.
ojp.gov
- *Moral Panics and Sex Offender Recidivism* – Center on Juvenile and Criminal Justice
Explores how fear-driven policies often lead to ineffective legislation.
cjcj.org

Questions to Consider: Engaging with Downstate

- *Downstate* challenges audiences to consider the humanity of individuals who have
How does Downstate complicate the idea of redemption?
- *Do the characters in Downstate serve their time, or does society impose ongoing punishment?*
- *How does the play balance justice for survivors with the treatment of those who have served their sentences?*
- *Does the play ask us to empathize with characters we might otherwise reject? If so, how?*
- *How do power dynamics play out between the parolees and their parole officer, Ivy?*
- *How does Bruce Norris use humor in the play? Does it challenge or complicate the subject matter?*
- *How does the play's setting (a group home) influence the story?*

DONORS

BELOW IS A LIST OF PEOPLE WHO BELIEVE THAT THEATRE CAN CHANGE THE WORLD, AND WHO GAVE BOLDY, FIERCELY, AND GENEROUSLY TO SUPPORT FEARLESS ART. THEY MAKE IT ALL POSSIBLE FROM JANUARY 1, 2024 TO DECEMBER 31,, 2024.

To donate to Curious, call 303-623-0524 ext 707, talk to the box office today, or visit www.curious theatre.org/donate.

\$100 - 499

Lezlie Adler
Liz Amaral
Bevin Antea
Tom Atkins
Laura Barton
Eliot Baskin
Deborah Behrens
Bobby Bennett
Noelia Berkes
Lawrence Berliner
Susan Berzac and Ralph
Jollensten
donnie betts
Susan Boehm
John Brace
Jeannene Bragg
Paul Bretz and Brad
Hoffner
Lindsay Breyer
Susan Brickley
Tom Bruett
William Cameron
Diane Carman
Karen Carpenter
Gwen and Richard Chanzit
Michael Cheroutes
Fox Chung
Ashley Cordero
Susan Courser
Laura Cowperthwaite
Heather Dahms
Martha Daniels
Charles Davenport
Richard M Devin
Bruce Doenecke
Robert Duke
Arlene Dykstra
Camille Emeagwali
Lisa Erickson
Courtney Esser

Nancy Ewing
Janet Fairs
Sandra Farkas
Joseph Fillmore
William Fisher
Lee Fisher-Rosenberg
Kevin Fitzpatrick
Ann Fox
Sigrid Freese
Louis Freese
Belina and Alan Fruitman
Desiree Gagnon
Joe Galetovic
Andrew Garling
Denise Gentilini
Douglas M Gertner
John Gibert
Joanne Gipple
Cody Goebel
Barb & Brad Goodman
William Gorham and
Joanne McGee
K.L. Gray
Korin Haight & Toby Branch
Robert Ham
Felicity Hannay
Peggy Hanson
Leanna S Harris
Jessie Harris
Bernice Harris and Teb
Blackwell
Josh Hartwell
Mark Heneghan
Elizabeth and Timothy
Hepp
Byron & Arlene Hicks
Carl Higginson
Pat Hill
Jean Hodges
Michael Homyak

Lorraine Hoover
DJ and Deb Janik
Kathryn Jens
Susan Jenson
Helen Johnson
Paulette Johnson
Douglas Johnson
Peg Johnston
Elizabeth Jones
Cyndi and Ed Kahn
Judy Karp
Ilene Kasper
Ron Katz
Donna Keeler
David Keller
Carla and Richard Kem
Jennifer & Craig Kemmerer
Amy Kennedy and Steve
Miller
Denis Kissounko
Roberta and Mel Klein
Debbie Klisis
Debbie Kunkel
Amy Le
Ingrid Lindemann
Vicki Lindner
Susan Litt
Callie Ludwig
Joe Mack
Juanita MacKenzie
Anthony Marshall
Susan Marshall
Len & Lisa Matheo
Michael McNeill
Julie Meyers
Thomas Migaki
Carolee Miller
Wendy Miller
Christy & Mark
Montour-Larson

Hele Maria Moshak
Martha Neighbors
Margaret Nelson
Dorothy Norbie
Victoria and David Norris
Trent Novak and Cynthia
Dash
Annie Oldakowski
Allison Olien
Susan Osgood
John Parkinson
Maureen Patrick
Patt Paul
Helen Pendill
Amy Phillips
Angela Pi
Russell Pierce
Fay and Mark Plummer
Anthony Powell
Julie Rada
Alexandra Radcliffe
Graham Ray
Samuel Reeves
Ellen Rehmar
Jennifer Rhulen
Myra Rich

Roger Ritvo
Sandra Roberts-Taylor
Anne Robles
David Rochlin
Sarah Romer
Joanna Rosenblum
Johanna Rowan
John Rymers
John and Vivian Sabel
Lee Sammons
Jo and Richard Sanders
Anne Sandoe
Erica Sarzin-Borrillo
PB Schechter
Marshall Schechter
Elizabeth Schneider
Arthur Scrutchins
Sean Scrutchins
William and Patricia Shaffer
Katrina Shanks
Karen Slack
Bob Smith
Marc and Katy Spritzer
Susan Stark
Charlotte Stelmok
M Elsbeth Sweeney

Janny Tansil
Kay Taylor
Diane Tegmeyer
Nancy Thoennes
Olivia Thompson
Patricia Tomcho
Kate Tribbett
Leslie and Jason Trow
Coleman & Deborah
Tuggle
Jackson Turnacliff
Rachel Turner
Lorenzo Ubias
Loree Vanderhye
Donna and Tom Ward
Ben Warden
Jody Webb
Katie Webster
Adriana Weinberg
Julie Williamson
Kenneth Wilson
Jody Webb and Judy Wolfe
Richard Woodruff
Colin Young
Chuck Zabel
Morton Zeppelin

\$500 - 999

Armando and Shawn Bustamante
Judith Cadwallader
Mark Chase
Peggy Chipman
Steve Choquette
Ann Corrigan
Barbara and Herschel Cravitz
Katie Cymbala
Dick Devin
Carl Dixon
Kelly Donovan
Lois and Bruce Feinstein
Paul & Darcie Frohardt
Anne Grove
Marcie Haloin
Mark Henry
Terri Hoopes
Steven & Heather Hughes

Phillip Edward Johnson & Lou Raders
Sarah Kolb
Susan LaHoda
Michael McNeill
Christopher H Merrell
Thomas Michaels
Joseph Miltimore
William Mohrman
Clara Morris
Susan Motika
Dorothy Ownes
Eduardo and Anita Pajon
Josh Robinson
Stuart Sanks
Marjorie Schaffner
Patricia Simpson
Elizabeth Vernon
Annette Westerby

\$1000 - 4999

Richard Akeroyd
Elizabeth Anderman
Bank of America
Dianna Barrett
Robert Blauvelt and Michael Corrigan
Howard and Kathleen Brand
J Robert Brown Jr
Kimberley Burnett
Rachel Calderon
Rosalyn Carpenter
Penelope Cole
Jada Dixon
Kelly Dunkin
Stephen & Laura Feldman
Jennifer Filipowski
Jim Gusek and Shelley Fleetwood
Morse Family Foundation
Meridith Friedman
Caroline Fuller
Donna Bryson & Frederick Glick
Mark Groshek
Jessy Hennesy
Bill Hoffman
Jim and Kathryn Kaiser
Theresa and Bob Keatinge

Michelle Kenney
Ellen and Dale LaGow
Greg Laugero
Paul Manoogian
Rebecca Martin
Carla McConnell
Diana and Johnny McEwen Adams
Nancy McMahan
Bonnie O'Connell
William Peebles
Linda and Frank Plaut
Ben Raanan
Jessica Robblee
Pesha Rudnick
Sammy Scoma
Jamie White & Andrew Sirotnak
Lenora and David Slack
LaDawn Sullivan
Tina Walls
Hanna Warren
Deborah Webster
Harry Webster
Susan Weinstein
Chris Wineman
Carol Wolf

\$5000 - 9999

Kim Allegretti
Nancy Devitt
Fred and Rosie Pittroff

Michael Potts
Alyssa Williams

\$10,000+

Richard Brown
Marika Fitzgerald
John and Stephanie Flanigan
Eulipions Fund
Kristen Graham
Chip Horne and Dr Jan Kennaugh
Fredericka Jura
Diana and Mike Kinsey

Deborah Martin
Lynne and Jon Montague-Clouse
Maria Osmanski
Sheri Raders
Nancy Sarka
Jim & Lori Steinberg
Pam & Sonny (Robert) Wiegand II

BOARD & STAFF

BOARD OF DIRECTORS

Sheri Raders, *President*
Michael Potts, *Vice President*
John Flanigan, *Treasurer*
Marika Fitzgerald, *Secretary*

Chip Horne
Greg Laugero
Alyssa Williams

*Jeremy Shamos, *Honorary Lifetime*

President
*Roscoe Hill, *Board Member Emeritus*
*Cajardo Lindsey, *Artistic Company Member*
*Erik Sandvold, *Artistic Company Member*
*Jada Suzanne Dixon, *Producing Artistic Director*

**non-voting members*

STAFF

ARTISTIC

Jada Suzanne Dixon, *Producing Artistic Director*
Wayne Breyer, *Production Manager & Resident Stage Manager*
Christy Montour-Larson, *Education & Literary Manager*
Michael Morgan, *Technical Coordinator*

2024-25 CURIOUS BRIDGE APPRENTICES

Amie Benjamin, *Stage Management*
Cambria Bartlett, *Stage Management*
Samantha Heppenstall, *Directing*

ADMINISTRATIVE

Emily Whalen, *Marketing Manager*
Katelyn Sauer, *Development & Patron Services Manager*
Andrew Moser, *Business Manager*

FRONT OF HOUSE

Katelyn "Katie" Flynn, *Front of House Lead*
Cambria Bartlett, *Front of House Representative*
Evy DiPasquantonio, *House Manager*
Christiana Martinez, *Front of House Representative*
Evette Srouji, *House Manager*
Kara White, *Front of House Representative*

CURIOUS ARTISTIC COMPANY

ARTISTIC COMPANY

Tina Anderson
Lisa Boehm
Kevin Brainerd (*In Memoriam*)
Anastasia Davidson
Richard Devin
Jada Suzanne Dixon
Jason Ducat
Brian Landis Folkins
Kristina Fountaine
Ilasiea Gray
Kathryn Gray
William Hahn
Josh Hartwell
Markas Henry
GerRee Hinshaw

Jim Hunt
Janice Lacek
Cajardo Lindsey
Sheryll McCallum
Shannon McKinney
Michael McNeill
Christy Montour-Larson
Michael Morgan
Josh Robinson
Erik Sandvold
Sean Scrutchins
Karen Slack
Todd Webster (*In Memoriam*)
Annette Westerby

ARTISTIC COMPANY EMERITI

Thank you to our founding Artistic Company Members whose dedication, hard work and artistic vision has helped make Curious the amazing theatre it is today.

Dee Covington
Chip Walton